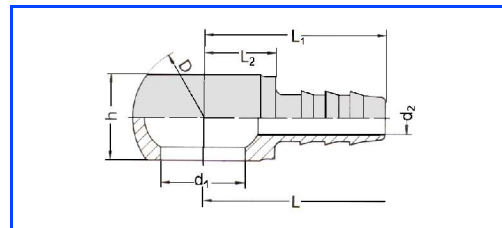


TECALAN – Push-in couplings for hose and tubing

TR-banjo following DIN 7642 (R)

Push-in couplings for TECALAN plastic tubes and hose series AF, AF GE, N and ZF, couplings with banjo, to use with banjo bolts .

Material: steel, zinc, plated



| code: TR-insert | DN | dimensions in mm | | | | | | for inside-Ø in mm | fits with banjo bolt: | part-no. |
|--------------------|----|------------------|----------------|----|----|----------------|----------------|-----------------------|-----------------------|--------------|
| | | d ₁ | d ₂ | h | D | L ₁ | L ₂ | | | |
| R 8 - 3 | 3 | 8 | 1,8 | 8 | 14 | 22 | 10 | 3 | M 8 x 1 | 4.12 76 21.7 |
| R 8 - 4 | 4 | 8 | 3 | 8 | 14 | 24 | 7 | 4 | M 8 x 1 | 4.12 76 30.7 |
| R 10 - 4 | 4 | 10 | 3 | 10 | 17 | 26 | 9 | 4 | M 10 x 1 | 4.12 86 35.7 |
| R 10 - 5 | 5 | 10 | 3,8 | 10 | 17 | 26 | 9 | 5 | M 10 x 1 | 4.12 76 40.7 |
| R 12 - 5 | 5 | 12 | 3,8 | 12 | 20 | 28 | 10 | 5 | M 12 x 1,5 | 4.12 86 45.7 |
| R 10 - 6 | 6 | 10 | 4,8 | 10 | 17 | 26 | 9 | 6 | M 10 x 1 | 4.12 86 37.7 |
| R 12 - 6 | 6 | 12 | 4,8 | 12 | 20 | 28 | 10 | 6 | M 12 x 1,5 | 4.12 76 50.7 |
| R 14 - 6 | 6 | 14 | 4,8 | 14 | 24 | 28 | 12 | 6 | M 14 x 1,5 | 4.12 86 55.7 |
| R 16 - 6 | 6 | 16 | 4,8 | 16 | 28 | 30 | 14 | 6 | M 16 x 1,5 | 4.12 86 63.7 |
| R 12 - 8 | 8 | 12 | 6,3 | 12 | 20 | 34 | 10 | 8 | M 12 x 1,5 | 4.12 76 60.7 |
| R 14 - 8 | 8 | 14 | 6,3 | 14 | 24 | 34 | 12 | 8 | M 14 x 1,5 | 4.12 86 56.7 |
| R 16 - 8 | 8 | 16 | 6,3 | 16 | 28 | 36 | 14 | 8 | M 16 x 1,5 | 4.12 86 64.7 |
| R 14 - 10 | 10 | 14 | 8 | 14 | 24 | 34 | 12 | 9 und 10 | M 14 x 1,5 | 4.12 76 70.7 |
| R 16 - 10 | 10 | 16 | 8 | 16 | 28 | 36 | 14 | 9 und 10 | M 16 x 1,5 | 4.12 86 65.7 |